

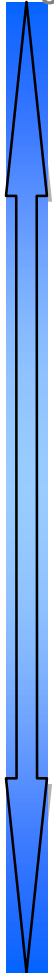
---

# **The Knowledge Management Unit**

# KM Program Governance

**Knowledge Management Governance Committee**

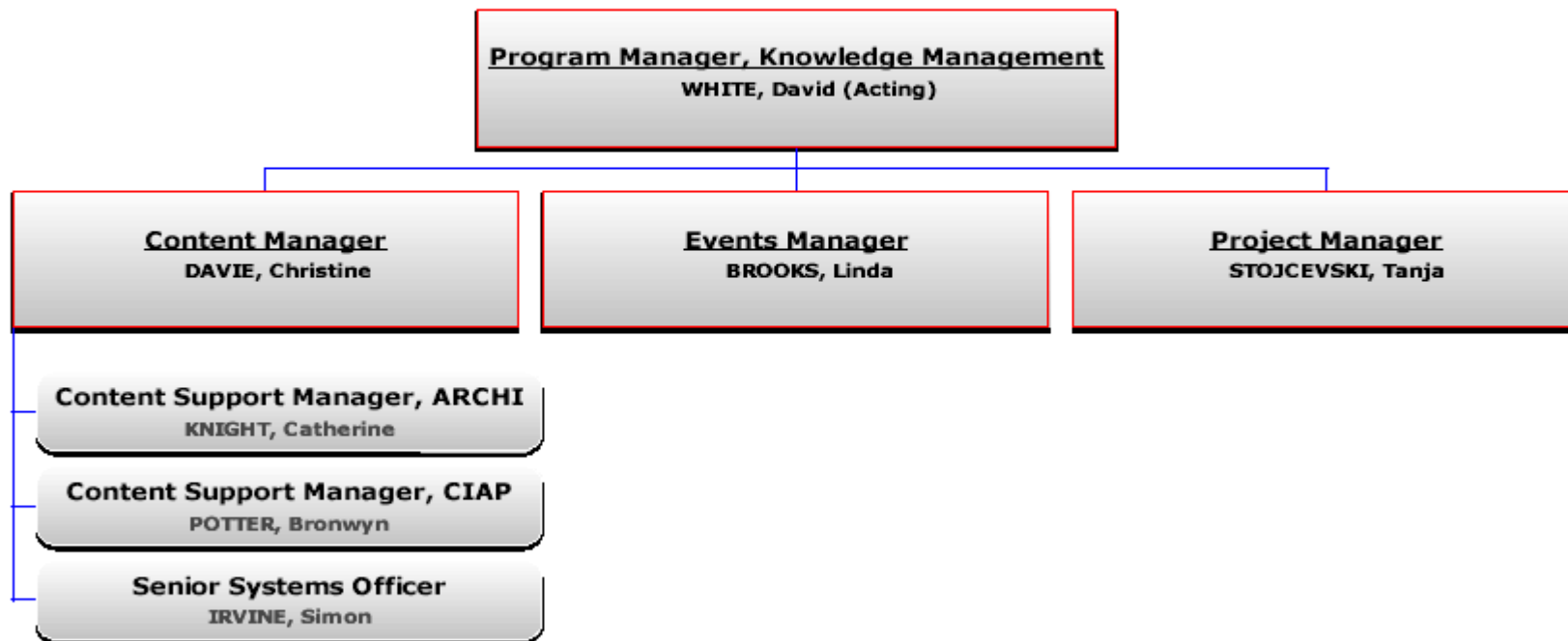
*Strategic*



**Knowledge Management Reference Group**

DOH Librarian – Gillian Wood  
GLUG Representative – Trish Bennett  
Graham Spooner – College of Nursing

*Operational*





---

## The Knowledge Management Unit

Online or e-resources

- CIAP
- Australian Resource Centre for Health Innovation (ARCHI)
- Knowledge Gateway

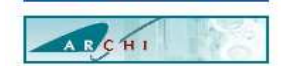
KM support tools – discussion, collaboration, sharing and distribution

Event Management

Web services

Evaluation

- USE**  
Unified Search Environment
- MIMS >
  - Other Drug Resources >
  - Micromedex >
  - MD Consult >
  - Medline >
  - Embase >
  - PsycINFO >
  - CINAHL >
  - Nursing Consult >
  - Midwifery & Infant Care >
  - Evidence-Based Practice >
  - Online Journals >
  - Online Books >
  - Clinical Guidelines & Tools >



### Welcome to CIAP!

The **Clinical Information Access Program (CIAP)** provides information and resources to support evidence-based practice at the point of care. This resource is available to all nurses, midwives, doctors, allied health, community health, ancillary and library staff working in the NSW public health system.

Tuesday November 21 2006

#### What's New @ CIAP

- > [CI-SCaT - The Cancer Institute NSW Standard Cancer Treatments](#)
- > [A is for Archive only in the Full Text Journal List](#)
- > [The Net News - ARCHI's newsletter](#)
- > [CIAP Full Text Journal List - updated list available](#)
- > [TNM Online now available for PDAs](#)
- > [Baxter Awards and NSW Health EXPO presentations available on ARCHI](#)
- > [New ARCHI Content - Transitional Aged Care Model of Care and Master Class with Gill Heaton](#)
- > [ARCHI - a new fact sheet available](#)

[More What's New @ CIAP stories ...](#)

#### User Guides and Resources

- > [Guide to the resources on CIAP in 2006 \(139KB\)](#)
- > [Journals on CIAP in 2006 \(90KB\)](#)

#### Quick Links

- > [ARCHI](#)
- > [Clinical Excellence Commission](#)
- > [HealthTechnology \(Intranet\)](#)
- > [Greater Metropolitan Clinical Taskforce](#)
- > [Quality & Safety Branch](#)
- > [Report an Adverse Drug Reaction to ADRAC](#)

#### Need a CIAP user name and Password?

If you work in the NSW public health system, contact your [local CIAP representative](#) to obtain a CIAP **username** and **password**.

#### Getting Help

Having trouble with any of the CIAP web pages or resources? Send us some [Feedback](#) or contact the 24 hour CIAP help desk on ...

**1800 824 279**

See also the [CIAP Help](#) web page.

For **non-urgent** assistance, email us at [ciap@htech.health.nsw.gov.au](mailto:ciap@htech.health.nsw.gov.au)

**You can also contact your**

ARCHI - Home - Mozilla Firefox

File Edit View Go Bookmarks Tools Help

http://www.archi.net.au/

Douglas Piper Library

ARCHI  
Australian Resource Centre for Healthcare Innovations

Printer Friendly | Contact us | Site Map | Links | Login / Logout

SEARCH enter keywords here OK

Home About Events E-Library Our Services E-Buy

LOGIN

Login

Password  Login

JOIN US  
Become a member of ARCHI

CONTRIBUTE  
Submit an article to ARCHI

PARTICIPATE  
Join a discussion group

Improvement Themes

>> Full listing

- ▶ **Building Blocks for Clinical Redesign**  
[Models of Care](#) | [Clinical systems improvement](#) | [Leadership](#) | [More...](#)
- ▶ **Clinical**  
[Clinical Tools](#) | [Heart Disease](#) | [Respiratory](#) | [Surgery](#) | [More...](#)
- ▶ **Health Administration**  
[Disaster Management](#) | [Patient Safety](#) | [Quality](#) | [More...](#)
- ▶ **Managing Demand**  
[Access](#) | [Bed Management](#) | [Capacity and Demand](#) | [More...](#)
- ▶ **Service**

You are here : Home



**WELCOME TO ARCHI**

The Australian Resource Centre for Healthcare Innovation (ARCHI) is the knowledge sharing hub for Australian health professionals and health service managers who are working to deliver better patient journeys. More than just a source of information, ARCHI is a dynamic hub that actively supports the learning process for health professionals involved in clinical service redesign initiatives around Australia. ARCHI supports "communities of practice" – promoting discussion of particular aspects of clinical service redesign, and sharing tools and resources that emerge from clinical redesign projects.

[Read more ABOUT US](#)

**What's New**



- >> [Conference Presentations](#)
- >> [Recent additions to the Compendium of Resources and Tools \(CORT\)](#)
- >> [Recent additions to the Compendium of Policies, Practices and Procedures](#)
- >> [Recent additions to the e-library](#)
- >> [Net News](#)

Done

NSW Health KM PM 28 Feb Version 1.7 CSRPSG

start In... Do... Un... CI... NS... Ac... Mo... AR... EN 9:55 PM

Search

CALENDAR

« November »

« 2006 »

Mo	Tu	We	Th	Fr	Sa	Su
» 30	31	1	2	3	4	5
» 6	7	8	9	10	11	12
» 13	14	15	16	17	18	19
» 20	21	22	23	24	25	26
» 27	28	29	30	1	2	3

Submit an event »

Upcoming Events

- NSW Midwives Association Annual State Conference 'Sowing the Seeds: Nurturing Growth'
- Pain Forum
- ACHSE Conference : Developing Clinical Leadership
- A Measure of Hospital Health: The Biennial Health Conference 2006

GO DIRECTLY TO A SITE IN THE GATEWAY

Welcome to the new Knowledge Gateway!

This is your **first step** to searching important health resources and other information.

Search using the powerful **search engine above** or just click on the **links below to access individual sites.**

- Australian Commission on Safety and Quality in Healthcare
- Australian Resource Centre for Healthcare Innovation (ARCHI)
- Cancer Institute NSW
- Clinical Excellence Commission (CEC)
- Clinical Information Access Program (CIAP)
- Department of Health and Ageing
- Greater Metropolitan Clinical Taskforce (GMCT)
- HealthInsite
- Institute for Healthcare Improvement (IHI)
- [Quality and Safety](#)

Feedback



**Contact:**

Christine Davie

[Christine.davie@htech.health.nsw.gov.au](mailto:Christine.davie@htech.health.nsw.gov.au)

02 8644 2328